

Auction Catalogue
Auction conducted by mjunction services ltd
SALE OF NCO MATERIALS OF Essar Steel India Ltd
being sold on “AS IS WHERE IS AND NO
COMPLAINT BASIS”

Mandate Number:	TS142-95417
Seller:	Essar Steel India Limited
Auction website:	auction.metaljunction.com
Auction Type:	English No ties
e-Auction Date & Time:	FA 22 Dt. 23.01.2015, Time 11.30am
Inspection Date & Time:	Any day before auction with prior appointment with mjunction services as per contact details mentioned below
EMD Amount & Submission Date :	Online EMD deposit of 20,000/- . Last Date for EMD Submission is on 23rd Jan 2015 by 10am (Customer will be attached on the basis EMD amount showing in account till 1pm on 23rd Jan 2015)

Contact Details :		
Essar Steel India Ltd		
Service Center	Contact Person	Contact Details
Pune	Amit Patole	9923207749
Bahadurgarh	Rahul Yadav	8053119816
Chennai	Raja Bharathi	8939762628
Bhuj	Jignesh Chotara	9909901924
Indore	Chhanijar Dharamraj	7566668040
mjunction services limited		
Location	Contact Person	Contact Details
Mumbai / Pune	Vishwanath Pandey / Dharmendra Singh	7738021128 / 9595644336
Faridabad / Bahadurgarh / North India	Pravin Kumar / Nirmal Ghosh	09717010458 / 9958001157
Southern Region	S Raghavendra	9840935953
Western Region/Gujarat	Javed Islam	08584008178
Northern Region	Devasish Jha	08584008179
Kolkata	Snehasish Bannerjee	9163348145

A.: Material details Quantity mentioned below is indicative (+/-10% variance)

MATERIAL LIST ATTACHED BELOW :-

"THESE ARE TENTATIVE SIZE DETAILS. SOME SIZE MAY VARY OR NOT BE AVAILABLE"

Material Inspection notes – Customers are requested do the material inspection before the auction and check whether the material description mentioned in the catalogue is matching with the actual material at site (in case of mismatch customers should inform us for correction before the auction). After auction "No complain" would be entertained regarding material description/quality etc.

Stock lifting clause – If any customer fails to lift the stock qty (10MT and above/3MT and above in case of packing scrap) by 05th Feb-15, such lots may be treated as "Abandoned goods", at the risk and cost of the buyer. The Management will have full right on such 'Abandoned goods' and will be entitled to resell or dispose off the same in any manner it deems fit, without any reference to the purchaser. The buyer will have no claim on materials declared as the 'abandoned goods'.

TAX & Duties :

VAT / CST - As Applicable

C-Form - For Interstate sales CST will be 2% against "C" form otherwise full CST will be charged. "C" form is to be deposited with the respective Service Centre.

ED - As Applicable on all the above mentioned lots including "PACKING SCRAP".

TCS - Not Applicable

Service Tax Registration – All customers interested in the auction participation should have Service Tax Registration (without service tax registration, customer shall not be allowed to participate in the auction)

(Any change in Excise duty, taxes and levies applicable at the time of lifting shall be applicable)

B: Payment and Lifting Schedule:

1. 100% stock Payment to be deposited within 2 days of lot approval. (Stock mentioned above might increase based on generation, payments to be deposited as per actual stock. Actual Stock availability to be communicated by MJ representative thru phone call/email etc.)
2. Stock material to be lifted within 7 days from the date of lot approval.
3. As soon as the arising stock accumulated to 10MT or more, customer has to lift within 2 days after payment deposit.
4. 100% material (Stock + Arising) to lifted by 05th Feb-15.
Customer is not allowed to pick and choose during lifting and ensure ZERO ground (Site to clear).

EMD & 20% material value may be forfeited and customer may be debarred from participating in all future auctions failing to abide to the payment & lifting schedule as indicated above.

Note: a) For CST Sales, C forms to be deposited in advance else amount for full tax would be required to be deposited.

B) Requirements of participation:

- 1.1 Registration: Before participation in the e-Auction, a prospective bidder shall be required to get registered with mjunction services limited. For details visit auction.metaljunction.com
- 1.2 Documentation: The following documents need to be submitted by the bidder interested in participating in the e-Auction to mjunction services limited prior to the date of the eAuction.
 - ***Bidder should send the details of the payment done to mjunction services limited - Kolkata stating the UTR No., Bank and Branch name, Date, Amount, the payment made for and the lot details want to participate in his company letter head duly signed & stamped. Fax to 03366011719 or scan & e-Mail to snehasish.banerjee@mjunction.in, javed.islam@mjunction.in, devasish.jha@mjunction.in***
 - Bidders are requested to submit copies of their SOI's before participating in the e Auction.

1.3 Earnest Money Deposit (EMD): Non-Interest bearing security deposit of Rs.20000.00 (Rupees Twenty Thousand only for all lots and all locations) to be deposited through RTGS/NEFT in the account details mentioned below.

Bank Details:

Mjunction Services Limited

HDFC Bank Ltd.

2/6 Sarat Bose Road, Kol-20.

A/c. no. : 00140310003480

IFSC code: HDFC00000014

Important: *Bidder should send the details of the payment done to mjunction services limited - Kolkata stating the UTR No., Bank and Branch name, Date, Amount, the payment made for and the lot details want to participate in his company letter head duly signed and stamped.*

Fax to: 03366011719 or scan and e-mail to : snehasish.banerjee@mjunction.in, javed.islam@mjunction.in, devasish.jha@mjunction.in , It is

the responsibility of the bidder to submit the PRE-BID DEPOSIT on time and correctly. If any payment receipt is delayed to Mj account, it is understood that MJ would not allow the bidder to participate in the e-auction.

2. Material Inspection -:

2.1 Customers will be allowed to inspect the material at all the 5 Service centre (Pune, Chennai, Bahadurgarh, Bhuj and Indore (Pithampur) up to 22th Jan-14 (before 5pm) only after prior appointment with Essar/Mjunction officials.

2.2 No customers will be allowed to visit any of the 5 Service centres (Pune, Chennai, Bahadurgarh, Bhuj and Indore (Pithampur) after the auction.

3. **Bidding modalities:**

3.1 Price Bid Basis: In Indian rupees as per unit of measurement as given in Material List. Price to be quoted is basic, ex- location exclusive of taxes, duties and any other statutory levies.

3.2 Type of Auction: **English No ties.**

Incase of any clarification please contact MJ executives nos. as mentioned in the catalogue.

3.3 Bid Validity: Bid shall be valid for 10 working days from the date of auction.

4. **Taxes & duties:**

4.1 VAT / CST : As applicable

4.2 Excise Duty : As applicable

4.3 CST: For Interstate sales CST will be 2% against "C" form otherwise full CST will be charged. "C" form is to be deposited with the respective Service Centre

4.4 Any change in Excise duty, taxes and levies applicable at the time of lifting shall be applicable.

4.5 TCS not Applicable

4.6 **Service Tax Registration – All customers interested in the auction participation should have Service Tax Registration (without service tax registration, customer shall not be allowed to lift the material from service centres)**

4. Payment terms & conditions :

Payments: All payments in form of **demand draft/ RTGS ONLY**, payable as per details below
[Bank details as follows.](#)

FULL NAME OF THE BENEFICIARY	Essar Steel India Limited
BANK NAME	State Bank of India
BRANCH NAME	Hazira Branch

ACCOUNT NUMBER	33755115555
ACCOUNT TYPE	CMP
BENEFICIARY BANK'S IFSC	SBIN0005996

For any payment related issues please contact Mr. Rajkumar Bhatia, Mob – 9879101520 (Essar Steel India Ltd) & Mr. Snehasish Bannaerjee , Mob – 09163348145 (mjunction services limited)

5. Lifting and Loading Terms & Conditions

- 5.1 DOs will be handed over by Essar Steel India Steel Ltd to authorized representatives of bidders on receipt of payment.
- 5.2 Loading time – 9 am to 5pm.
- 5.3 Loading Arrangement: Buyer has to engage his own resources i.e. Labours, Hydra, Vehicles to load and transport the material unless Lots are specified for Company loading.
- 5.4 Essar Steel India Ltd. does not give any guarantee for the quantity mentioned in the Notice / Acceptance letter. The above quantity is merely indicative and no claim for compensation / delay or for any shortfall in the quantity shall lie against Essar Steel India Ltd.
- 5.5 Completion of Lifting: For all Lots successful bidders have to complete the lifting of the allocated lots within 05th Feb 2015.**
- 5.6 Penalty Clause – a) Customer has to ensure entire lot lifting and make ground stock “Zero” within the time.**
b) In case of non- lifting of full lot quantity after making full payment, a penalty equivalent to 20% of the material value for the un-lifted quantity against each lot shall be recovered from the customer.
- 5.7 Loading of material will be done under the supervision of representative/officials of ESSAR STEEL INDIA LTD.
- 5.8 Delivery of material will be done during working hours on all working days on presentation of the delivery order by the purchaser to the authorized person of ESSAR STEEL INDIA LTD who may suspend the deliver for the particular period of time due to any operational/technical reason.
- 5.9 The removal of the material within the stipulated period is not subject to the availability/or otherwise of the labour & such other factors as climate condition & transport etc. which is the responsibility of the purchaser.
- 5.10 No picking, sorting, cutting, cleaning or breaking up of goods of materials sold will be permitted, except in certain special circumstance where prior sanction for Such a has been accorded by the Management.
- 5.11 Weighment: ESSAR STEEL INDIA LTD shall arrange for Weighment of the product at their own weigh bridge and such weighment shall be final for all purposes including for payment.
- 5.12 Abandoned goods: The non-lifted material left over will be treated as "Abandoned goods", at the risk and cost of the buyer. The Management will have full right on such 'Abandoned goods' and will be entitled to resell or dispose off the same in any manner it deems fit, without any reference to the purchaser. The buyer will have no claim on materials declared as the 'abandoned goods'

6. Penalties:

- 6.1 In case customer fails to deposit the payment or fails to lift the material (Stock + Arising) within time as mentioned , such lot/lots would be treated as abandoned lot and Essar Steel India Limited would be entitled to resell or dispose off the same in any manner it deems fit, without any reference to the purchaser. The buyer will have no claim on materials declared as the 'abandoned goods'. Essar Steel India Limited shall also forfeit the entire EMD & 20% material value of the unlifted quantity and may also debar such customer in next one or more auctions.

7. Jurisdiction :

Any dispute arising out of any contract shall be decided in **Mumbai** by the courts in Mumbai and by no other courts. The courts in **Mumbai** shall have exclusive jurisdiction to adjudicate upon any such dispute.

8. Payment refund process –

Customers applying for payment refund must complete the following requirements –

- 1. Customer must submit the “C” form before applying for the refund payment, without “C” form submission, No refund request will be accepted.**
- 2. Customer to apply the refund request in the following format –**

(Letter to be received from Customer on their letterhead.)

M/S Essar Steel Limited

Date:

HAZIRA.

Dear Sir/Madam,

Requesting you to refund Customer full and final settlement/payment of Rs.----- through RTGS to be credited in Customer Bank Account, details of which are given below:

Customer Bank Name: _____

Address of Customer Bank _____

Customer Bank Account Number: _____

Customer Bank Branch Name _____

Customer Bank Branch Location: _____

Customer Bank MICR Code: _____

Customer Bank RTGS IFSC Code: _____

Customer Bank NEFT IFSC Code: _____

Type of Account: **Current Account / Savings Account**

We hereby declare that the particulars given above are correct and complete. If the payments are delayed or not effected due to any reason, we shall not hold Essar Steel Ltd. or the banks responsible for such delays. We hereby authorise Essar Steel Ltd. to make all payments to us by credit to the above bank account.

Customer Code with Essar Steel Ltd. is _____

Essar Marketing Officer Name :- _____

Customer Email Id _____

Customer Contact No. _____

Customer Address _____

Yours Sincerely

For (Customer name)

Authorised Signatory.

BANK CERTIFICATE (Optional)

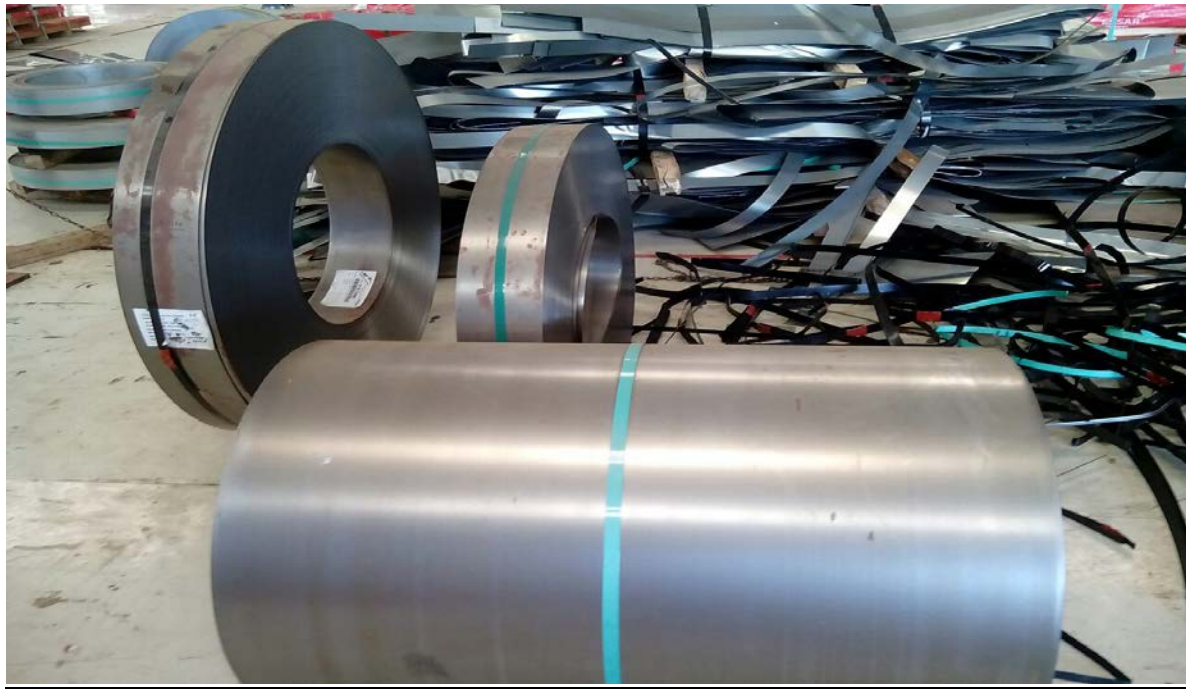
This is certified that above mentioned detail is correct and we hold the account of said party in Customer Bank.

- 3. Customer must enclose the “C” form receipt copy along with the refund request letter.**
- 4. Essar will only process the refund and release the payment within 45 days from the date of receipt of the complete documents mentioned above**

PHOTOGRAPHS

NOTE: Photographs of lots are at best indicative only and do not necessarily reflect the actual condition of lots. All bidders are advised to physically inspect the offered lots before participating in the auctions. Essar Steel India Ltd or mjunction services limited shall not be responsible or liable for any error of judgement or bids put by bidders acting on the basis of these photographs





Chennai







10. General terms & conditions:

- 10.1 **Any dispute on quality of material and bid cancellation shall not be entertained at any point after the auction.**
- 10.2 Materials shall be sold on “as is where is basis” and :no complaint basis” for all lots.
- 10.3 Lot transfer will not be allowed. Payment and invoicing has to done in the name of the H1 bidder, subject to the prices being approved.
- 10.4 Material purchased should be the only material being lifted from the designated location. Essar Steel India Ltd has the right to check any vehicle at any moment of time.
If material lifted differs from the material that is purchased by the buyer, and then the buyer/authorised representative will be permanently debarred. Also Essar Steel India Ltd can take any penal action against the buyer/authorised representative. All the material loaded in the vehicle is to be covered in order to follow the safety Compliance of Essar Steel India Steel Ltd. If the safety compliance is not followed then . Essar Steel IndiaLtd can penalize the buyer/authorised representative as deemed fit.
- 10.5 Authorized persons should follow the safety norms in compliance to Essar Steel Ltd.

Lot No.	SC	Product	THICK	WIDTH	Length	QTY	GRADE	EXCISE DUTY (% and RsPMT)
LOT 1	BHUJ	CRCASF	1.2	245	1200	0.258	SRCCRMB6	12.36%
	BHUJ	CRCASF	1.5	1229	780	0.62	SRTRC29	12.36%
	BHUJ	CRCASF	1.5	1229	780	0.348	SRTRC29	12.36%
	BHUJ	CRCASF	1.5	880	780	0.542	SRTRC29	12.36%
	BHUJ	CRCASF	1.5	1229	780	0.274	SRTRC29	12.36%
	BHUJ	CRCASF	1.45	200	1170	0.124	SREDD02	12.36%
	BHUJ	CRCASF	1.2	1040	900	0.22	SRTRC29	12.36%
	BHUJ	CRCASF	1.2	1040	900	0.436	SRTRC29	12.36%
	BHUJ	CRCACF	1.5	350	0	5.66	SRTRC29	12.36%
	BHUJ	CRCACF	1.5	350	0	5.89	SRTRC29	12.36%
	BHUJ	CRCACF	1.5	350	0	5.58	SRTRC29	12.36%
	BHUJ	CRCACF	1.4	405	0	2.21	SRTRC29	12.36%
	BHUJ	CRCACF	1.4	405	0	2.12	SRTRC29	12.36%
	BHUJ	CRCACF	1.4	405	0	2.08	SRTRC29	12.36%
	BHUJ	CRCACF	1.4	405	0	1.91	SRTRC29	12.36%
	BHUJ	CRCACF	1.2	190	0	3.06	SRTRC29	12.36%
	BHUJ	CRCACF	1.2	190	0	3.1	SRTRC29	12.36%
	BHUJ	CRCACF	1.2	190	0	2.72	SRTRC29	12.36%
	BHUJ	CRCACF	1.2	190	0	3.02	SRTRC29	12.36%
	BHUJ	CRCACF	1.2	190	0	3.12	SRTRC29	12.36%
	BHUJ	CRCACF	1.4	250	0	1.3	SRTRC29	12.36%
	BHUJ	CRCACF	1.4	250	0	1.34	SRTRC29	12.36%
	BHUJ	CRCACF	1.4	250	0	1.36	SRTRC29	12.36%
	BHUJ	CRCACF	1.4	250	0	1.3	SRTRC29	12.36%
	BHUJ	CRCACF	1.4	250	0	1.31	SRTRC29	12.36%
	BHUJ	CRCACF	1.4	250	0	1.38	SRTRC29	12.36%
	BHUJ	CRCACF	1.4	75	0	0.41	SRTRC29	12.36%
	BHUJ	CRCACF	1.4	75	0	0.37	SRTRC29	12.36%
	BHUJ	CRCACF	1.5	40	0	0.22	SRTRC29	12.36%
	BHUJ	CRCACF	1.5	40	0	0.22	SRTRC29	12.36%
	BHUJ	CRCACF	1.5	40	0	0.31	SRTRC29	12.36%
	BHUJ	CRCACF	1.5	40	0	0.28	SRTRC29	12.36%
	BHUJ	CRCACF	1.5	40	0	0.29	SRTRC29	12.36%
	BHUJ	CRCACF	1.5	40	0	0.22	SRTRC29	12.36%
					TOTAL	53.602		
	PUNE	CRCACF	1.46	650	0	2.725	SREDD02	5,439.63
	PUNE	CRCACF	0.5	142	0	0.825	SRSILE1	6,396.36
	PUNE	CRCACF	0.5	75.5	0	0.335	SRSILE1	6,394.03
	PUNE	CRCACF	0.5	75.5	0	0.335	SRSILE1	6,394.03
	PUNE	CRCACF	0.5	75.5	0	0.335	SRSILE1	6,394.03
	PUNE	CRCACF	0.5	146	0	0.835	SRSILE1	6,396.41
	PUNE	CRCACF	0.5	123	0	0.72	SRSILE1	6,395.83
	PUNE	CRCACF	0.5	272	0	1	SRSILE1	6,273.00
	PUNE	CRCACF	0.5	75.5	0	0.32	SRSILE1	6,271.88
	PUNE	CRCACF	0.5	75.5	0	0.125	SRSILE1	6,272.00
	PUNE	CRCACF	0.5	123	0	1.07	SRSILE1	6,271.96
	PUNE	CRCACF	0.5	123	0	1.065	SRSILE1	6,273.24
	PUNE	CRCACF	0.5	146	0	0.515	SRSILE1	6,273.79
	PUNE	CRCACF	0.5	123	0	0.56	SRSILE1	6,273.21
	PUNE	CRCACF	0.5	123	0	0.69	SRSILE1	6,272.46
	PUNE	CRCACF	0.5	142	0	0.135	SRSILE1	6,274.07
	PUNE	CRCACF	0.5	142	0	0.305	SRSILE1	6,272.13
	PUNE	CRCACF	0.5	142	0	1.03	SRSILE1	6,272.82
	PUNE	CRCACF	0.5	142	0	0.765	SRSILE1	6,273.20
	PUNE	CRCACF	0.5	142	0	0.225	SRSILE1	6,271.11
	PUNE	CRCACF	0.5	142	0	0.85	SRSILE1	6,272.94

Lot 2	PUNE	CRCACF	0.5	146	0	0.84	SRSILE1	6,272.62
	PUNE	CRCACF	0.5	146	0	0.88	SRSILE1	6,272.73
	PUNE	CRCACF	0.8	154	0	0.75	SRCCRMB6	12.36%
	PUNE	CRCACF	2	160	0	1.035	SRCCRMB6	12.36%
	PUNE	CRCACF	1.2	62	0	0.235	SRCCRMB6	12.36%
	PUNE	CRCACF	1.2	62	0	0.235	SRCCRMB6	12.36%
	PUNE	CRCACF	1.2	62	0	0.235	SRCCRMB6	12.36%
	PUNE	CRCACF	1.2	62	0	0.235	SRCCRMB6	12.36%
	PUNE	CRCACF	1.2	62	0	0.235	SRCCRMB6	12.36%
	PUNE	CRCACF	1.2	62	0	0.235	SRCCRMB6	12.36%
	PUNE	CRCACF	1.2	62	0	0.235	SRCCRMB6	12.36%
	PUNE	CRCACF	1.2	62	0	0.235	SRCCRMB6	12.36%
	PUNE	CRCACF	1.2	62	0	0.235	SRCCRMB6	12.36%
	PUNE	CRCACF	1.2	62	0	0.235	SRCCRMB6	12.36%
	PUNE	CRCACF	1.2	62	0	0.235	SRCCRMB6	12.36%
	PUNE	CRCACF	1.2	62	0	0.235	SRCCRMB6	12.36%
	PUNE	CRCACF	1.2	62	0	0.235	SRCCRMB6	12.36%
	PUNE	CRCACF	1.2	62	0	0.235	SRCCRMB6	12.36%
	PUNE	CRCACF	1.2	62	0	0.235	SRCCRMB6	12.36%
	PUNE	CRCACF	1.2	62	0	0.235	SRCCRMB6	12.36%
	PUNE	CRCACF	1.2	62	0	0.235	SRCCRMB6	12.36%
	PUNE	CRCACF	1.2	62	0	0.235	SRCCRMB6	12.36%
	PUNE	CRCACF	1.2	62	0	0.235	SRCCRMB6	12.36%
	PUNE	CRCACF	1.2	62	0	0.235	SRCCRMB6	12.36%
	PUNE	CRCACF	1.2	62	0	0.235	SRCCRMB6	12.36%
	PUNE	CRCACF	1.2	62	0	0.235	SRCCRMB6	12.36%
	PUNE	CRCACF	1.2	62	0	0.235	SRCCRMB6	12.36%
	PUNE	CRCACF	1.2	62	0	0.235	SRCCRMB6	12.36%
	PUNE	CRCACF	1.2	62	0	0.235	SRCCRMB6	12.36%
	PUNE	CRCACF	1.2	62	0	0.235	SRCCRMB6	12.36%
	PUNE	CRCACF	1.2	62	0	0.235	SRCCRMB6	12.36%
	PUNE	CRCACF	1.2	62	0	0.235	SRCCRMB6	12.36%
	PUNE	CRCACF	1.2	62	0	0.235	SRCCRMB6	12.36%
	PUNE	CRCACF	1.2	62	0	0.235	SRCCRMB6	12.36%
	PUNE	CRCACF	1.2	62	0	0.235	SRCCRMB6	12.36%
	PUNE	CRCACF	1.2	62	0	0.235	SRCCRMB6	12.36%
PUNE	CRCACF	1.2	62	0	0.235	SRCCRMB6	12.36%	
PUNE	CRCACF	1.2	62	0	0.235	SRCCRMB6	12.36%	
PUNE	CRCACF	1.2	62	0	0.235	SRCCRMB6	12.36%	
PUNE	CRCACF	1.2	62	0	0.235	SRCCRMB6	12.36%	
PUNE	CRCACF	1.2	62	0	0.235	SRCCRMB6	12.36%	
PUNE	CRCACF	1.2	62	0	0.235	SRCCRMB6	12.36%	
					TOTAL	28.025		
Lot 3	PUNE	HRPLTF	9.2	575	575	4.045	SRTTRNT5	5,025.22
	PUNE	HRPLTF	9.2	575	575	4.05	SRTTRNT5	5,025.19
	PUNE	HRPLTF	9.2	575	575	4.05	SRTTRNT5	5,025.19
	PUNE	HRPLTF	9.2	575	575	3.735	SRTTRNT5	5,025.17
	PUNE	HRPOCF	4	144	0	0.805	SRTTRN37	12.36%
	PUNE	HRPOCF	4	144	0	0.805	SRTTRN37	12.36%
	PUNE	HRPOCF	4	90	0	0.505	SRTTRN37	12.36%
	PUNE	HRPOCF	4	90	0	0.505	SRTTRN37	12.36%
	PUNE	HRPOCF	4	90	0	0.505	SRTTRN37	12.36%
	PUNE	HRPOCF	4	90	0	0.505	SRTTRN37	12.36%
	PUNE	HRPOSL	6	169.5	0	1.157	SRTTRN30	12.36%
					TOTAL	20.667		
	PUNE	HRPOSF	4.75	417	1148	0.072	SRCTRN29	5,652.78
	PUNE	HRPOSF	6	169.5	1079	0.375	SRTTRN30	5,648.00

LOT 4	PUNE	HRPOSF	6	166.5	1136	1.102	SRTRN30	5,691.47
	PUNE	HRPOSF	6	166.5	1136	1.285	SRTRN30	5,691.83
	PUNE	HRPOSF	6	166.5	1136	1.39	SRTRN30	5,692.09
	PUNE	HRPOSF	6	166.5	1136	1.27	SRTRN30	5,692.13
	PUNE	HRPOSF	6	169.5	1079	1.075	SRTRN30	5,691.16
	PUNE	HRPOSF	6	169.5	1079	0.73	SRTRN30	5,691.78
	PUNE	HRPOSF	6	169.5	1079	1.03	SRTRN30	5,692.23
	PUNE	HRPOSF	6	169.5	1079	1.085	SRTRN30	5,692.17
	PUNE	HRPOSF	6	169.5	1079	0.85	SRTRN30	5,691.76
	PUNE	HRPOSF	6	169.5	1079	0.995	SRTRN30	5,691.46
	PUNE	HRPOSF	6	166.5	1136	1.39	SRTRN30	5,692.09
	PUNE	HRPOSF	6	166.5	1136	1.145	SRTRN30	5,691.70
	PUNE	HRPOSF	6	166.5	1136	1.24	SRTRN30	5,691.94
	PUNE	HRPOSF	6	169.5	1079	1.055	SRTRN30	5,691.94
	PUNE	HRPOSF	6	169.5	1079	1.113	SRTRN30	5,691.82
	PUNE	HRPOSF	3.2	1250	2500	0.322	SRDRW01	5,034.16
	PUNE	HRPOSF	1.9	460	815	0.36	SRCDRW02	12.36%
	PUNE	HRPOSF	4.75	574	834	0.44	SRCTRN29	12.36%
	PUNE	HRPOSF	4.75	574	834	0.825	SRCTRN29	12.36%
	PUNE	HRPOSF	2	465	2645	3.325	SRCDRW02	12.36%
	PUNE	HRPOSF	2	465	2645	3.32	SRCDRW02	12.36%
	PUNE	HRPOSF	2	465	2645	3.375	SRCDRW02	12.36%
	PUNE	HRPOSF	2	465	2645	3.375	SRCDRW02	12.36%
	PUNE	HRPOSF	2	465	2645	3.165	SRCDRW02	12.36%
	PUNE	HRPOSF	2	330	1245	1.16	SRCDRW02	12.36%
	PUNE	HRPOSF	2	330	1245	1.155	SRCDRW02	12.36%
	PUNE	HRPOSF	2	330	1245	1.165	SRCDRW02	12.36%
	PUNE	HRPOSF	2	330	1245	1.16	SRCDRW02	12.36%
	PUNE	HRPOSF	2	330	1245	1.29	SRCDRW02	12.36%
					TOTAL	41.639		
Lot 5	CHENNAI	CRCASF	0.65	1100	1035	0.06	SRCRMP2	5376.6
	CHENNAI	CRCASF	0.8	1250	2500	3.30	SRCRMB2	12.36%
	CHENNAI	CRCASF	0.8	810	1300	2.47	SRCRMB6	12.36%
	CHENNAI	CRCASF	0.8	810	1300	0.92	SRCRMB6	12.36%
	CHENNAI	CRCASF	0.6	1000	1980	0.28	SRCRMB2	12.36%
	CHENNAI	CRCASF	0.8	1250	2500	2.52	SRCRMB6	12.36%
	CHENNAI	CRCASF	0.4	1250	2500	0.96	SRCRMB2	12.36%
					TOTAL	10.51		
Lot 6	CHENNAI	CRCACF	0.5	45.5	0	0.25	SRCRMB2	12.36%
	CHENNAI	CRCACF	0.5	45.5	0	0.25	SRCRMB2	12.36%
	CHENNAI	CRCACF	0.6	106	0	0.46	SRCRMB2	12.36%
	CHENNAI	CRCACF	0.6	106	0	0.46	SRCRMB2	12.36%
	CHENNAI	CRCACF	0.6	106	0	0.46	SRCRMB2	12.36%
	CHENNAI	CRCACF	0.6	106	0	0.46	SRCRMB2	12.36%
	CHENNAI	CRCACF	0.6	106	0	0.46	SRCRMB2	12.36%
	CHENNAI	CRCACF	0.6	106	0	0.46	SRCRMB2	12.36%
	CHENNAI	CRCACF	0.6	106	0	0.42	SRCRMB2	12.36%
	CHENNAI	CRCACF	0.6	106	0	0.42	SRCRMB2	12.36%
	CHENNAI	CRCACF	0.6	106	0	0.42	SRCRMB2	12.36%
	CHENNAI	CRCACF	2.3	210	0	1.51	SRCRMB6	12.36%
	CHENNAI	CRCACF	2.3	210	0	1.51	SRCRMB6	12.36%
	CHENNAI	CRCACF	1.52	315	0	1.66	SRCRMB6	12.36%
	CHENNAI	CRCACF	1.52	315	0	1.66	SRCRMB6	12.36%
	CHENNAI	CRCACF	1.52	315	0	1.62	SRCRMB6	12.36%
	CHENNAI	CRCACF	1.52	315	0	1.62	SRCRMB6	12.36%
	CHENNAI	CRCACF	0.5	58	0	0.25	SRCRMB01	12.36%
	CHENNAI	CRCACF	1.2	82	0	0.39	SRCRMB6	12.36%

	CHENNAI	CRCACF	0.9	305	0	1.03	SREDD02	12.36%
	CHENNAI	CRCACF	0.9	305	0	1.04	SREDD02	12.36%
	CHENNAI	CRCACF	1.6	275	0	1.30	SRCRMB6	12.36%
	CHENNAI	CRCACF	1.6	275	0	1.31	SRCRMB6	12.36%
	CHENNAI	CRCACF	0.5	58	0	0.20	SRCRMB01	12.36%
	CHENNAI	CRCACF	0.5	58	0	0.08	SRCRMB01	12.36%
	CHENNAI	CRCACF	1	435	0	1.15	SREDD02	12.36%
	CHENNAI	CRCACF	0.7	58	0	0.27	SRCRMB6	12.36%
	CHENNAI	CRCACF	0.71	58	0	0.23	SRCRMB6	12.36%
	CHENNAI	CRCACF	0.6	55.5	0	0.24	SRCRMB2	12.36%
	CHENNAI	CRCACF	0.6	55.5	0	0.24	SRCRMB2	12.36%
	CHENNAI	CRCACF	0.6	55.5	0	0.22	SRCRMB2	12.36%
	CHENNAI	CRCACF	1.6	420	0	0.86	SRCRWB01	12.36%
	CHENNAI	CRCACF	1.6	320	0	0.64	SRCRWB01	12.36%
	CHENNAI	CRCACF	2.3	82	0	0.71	SRCRMB6	12.36%
					TOTAL	23.78		
Lot 7	CHENNAI	HRCF	2.2	1250	0	0.26	SRCRNB08	4,326.00
	CHENNAI	HRCF	3.5	1215	0	19.11	SRCRMB28	5,292.18
	CHENNAI	HRCF	3.5	1215	0	19.76	SRCRMB28	5,292.18
	CHENNAI	HRCF	3.5	1215	0	19.13	SRCRMB28	5,222.35
	CHENNAI	HRCF	3.5	1215	0	19.12	SRCRMB28	5,222.35
					TOTAL	77.37		
Lot 8	CHENNAI	HRCF	4.2	1205	0	19.33	SRCRMB28	5,292.18
	CHENNAI	HRCF	4.2	1205	0	19.43	SRCRMB28	5,222.35
	CHENNAI	HRCF	4.2	1205	0	19.47	SRCRMB28	5,222.35
	CHENNAI	HRCF	4.2	1205	0	19.06	SRCRMB28	5,222.35
	CHENNAI	HRCF	4.2	1205	0	18.99	SRCRMB28	5,222.35
	CHENNAI	HRCF	4.2	1205	0	19.09	SRCRMB28	5,222.35
					TOTAL	115.35		
Lot 9	CHENNAI	CRCASF	2.3	1250	2500	3.03	SRCRMB6	12.36%
	CHENNAI	CRCASF	2.3	1250	2500	1.46	SRCRMB6	12.36%
	CHENNAI	CRCASF	1.52	800	1570	1.82	SREDD02	12.36%
	CHENNAI	CRCASF	1.52	800	1570	2.06	SREDD02	12.36%
	CHENNAI	CRCASF	1.52	800	1570	1.14	SREDD02	12.36%
	CHENNAI	CRCASF	2	1250	2500	2.06	SRCRMB6	12.36%
	CHENNAI	GALSF	1.6	1220	2500	0.872	SRCRMB2	12.36%
					TOTAL	12.45		
	CHENNAI	CRCASF	1.5	126	1250	1.11	SRCRMB6	12.36%
	CHENNAI	CRCASF	1.5	126	1250	1.11	SRCRMB6	12.36%
	CHENNAI	CRCASF	1.52	85	1250	0.59	SREDD02	12.36%
	CHENNAI	CRCASF	1.52	85	1250	0.72	SREDD02	12.36%
	CHENNAI	CRCASF	2.3	338	1190	1.01	SRCRMB6	12.36%
	CHENNAI	CRCASF	2.3	338	1190	1.04	SRCRMB6	12.36%
	CHENNAI	CRCASF	2.3	85	1250	0.73	SRCRMB6	12.36%
	CHENNAI	CRCASF	2.3	85	1250	0.78	SRCRMB6	12.36%
	CHENNAI	CRCASF	2.3	85	1250	0.78	SRCRMB6	12.36%
	CHENNAI	CRCASF	2.3	85	1250	0.73	SRCRMB6	12.36%
	CHENNAI	CRCASF	2	89	1250	0.84	SRCRMB6	12.36%
	CHENNAI	CRCASF	2	89	1250	0.84	SRCRMB6	12.36%
	CHENNAI	CRCASF	2	78	1250	0.72	SRCRMB6	12.36%
	CHENNAI	CRCASF	2	89	1250	0.71	SRCRMB6	12.36%
	CHENNAI	CRCASF	2	89	1250	0.73	SRCRMB6	12.36%
	CHENNAI	CRCASF	2.5	288	1000	0.57	SRCRMB6	12.36%
	CHENNAI	CRCASF	2.5	990	760	1.64	SREDD02	12.36%

Lot 10	CHENNAI	CRCASF	1.52	1120	720	1.73	SRCRMB6	12.36%
	CHENNAI	CRCASF	1.52	550	335	0.33	SRCRMB6	12.36%
	CHENNAI	CRCASF	1.52	745	680	0.95	SRCRMB6	12.36%
	CHENNAI	CRCASF	1.52	745	680	1.15	SRCRMB6	12.36%
	CHENNAI	CRCASF	1.52	745	680	1.15	SRCRMB6	12.36%
	CHENNAI	CRCASF	1.52	745	680	1.15	SRCRMB6	12.36%
	CHENNAI	CRCASF	1.52	745	680	1.03	SRCRMB6	12.36%
	CHENNAI	CRCASF	1.6	74	1250	0.29	SRCRMB6	12.36%
	CHENNAI	CRCASF	1.6	69	1250	0.62	SRCRMB6	12.36%
	CHENNAI	CRCASF	1.6	74	1250	0.90	SRCRMB6	12.36%
	CHENNAI	CRCASF	1.6	69	1250	0.57	SRCRMB6	12.36%
	CHENNAI	CRCASF	2.3	237	1250	0.89	SRCRMB6	12.36%
	CHENNAI	CRCASF	2.3	237	1250	0.91	SRCRMB6	12.36%
	CHENNAI	CRCASF	2.3	237	1250	0.85	SRCRMB6	12.36%
	CHENNAI	CRCASF	1.14	580	1145	1.58	SRCRMB6	12.36%
	CHENNAI	CRCASF	1.14	580	1145	1.49	SRCRMB6	12.36%
	CHENNAI	CRCASF	1.14	580	1145	1.49	SRCRMB6	12.36%
	CHENNAI	CRCASF	1.14	580	1145	1.49	SRCRMB6	12.36%
	CHENNAI	CRCASF	1.14	580	1145	1.49	SRCRMB6	12.36%
	CHENNAI	CRCASF	2.5	220	965	0.92	SREDD02	12.36%
					TOTAL	35.62		
Lot 11	CHENNAI	CRCASF	2.5	220	965	0.87	SREDD02	12.36%
	CHENNAI	CRCASF	2.5	220	965	0.75	SREDD02	12.36%
	CHENNAI	CRCASF	2.5	220	965	0.69	SREDD02	12.36%
	CHENNAI	CRCASF	1.92	205	1050	1.05	SRCRMB6	12.36%
	CHENNAI	CRCASF	2.3	216	1210	0.21	SRCRMB6	12.36%
	CHENNAI	CRCASF	0.9	460	755	0.27	SREDD02	12.36%
	CHENNAI	CRCASF	0.9	460	755	0.26	SREDD02	12.36%
	CHENNAI	CRCASF	1.8	270	810	0.36	SRCRMB2	12.36%
	CHENNAI	CRCASF	2	304	1185	0.22	SRCRMB6	12.36%
	CHENNAI	CRCASF	0.6	680	820	0.18	SRCRMB2	12.36%
	CHENNAI	CRCASF	2.3	216	1210	0.89	SRCRMB6	12.36%
	CHENNAI	CRCASF	2.3	216	1210	0.42	SRCRMB6	12.36%
	CHENNAI	CRCASF	2.3	188.5	1250	0.35	SRCRMB6	12.36%
	CHENNAI	CRCASF	1	435	1320	1.56	SREDD02	12.36%
	CHENNAI	CRCASF	1.2	525	1575	0.22	SREDD02	12.36%
	CHENNAI	CRCASF	0.6	649.3	600	0.75	SRCRMB2	12.36%
	CHENNAI	CRCASF	1.6	410	1500	0.37	SREDD02	12.36%
	CHENNAI	CRCASF	2	378	1250	0.19	SRCRMB6	12.36%
	CHENNAI	CRCASF	1.2	82	1200	0.74	SRCRMB6	12.36%
	CHENNAI	CRCASF	1.7	230	480	1.03	SRTRC29	12.36%
	CHENNAI	CRCASF	1.7	230	480	1.02	SRTRC29	12.36%
	CHENNAI	CRCASF	1.6	113	1250	1.07	SRCRMB6	12.36%
	CHENNAI	CRCASF	1.6	113	1250	1.06	SRCRMB6	12.36%
	CHENNAI	CRCASF	1.6	113	1250	1.06	SRCRMB6	12.36%
	CHENNAI	CRCASF	1.6	113	1250	1.06	SRCRMB6	12.36%
	CHENNAI	CRCASF	1.6	113	1250	1.05	SRCRMB6	12.36%
	CHENNAI	CRCASF	1.6	92	1250	0.86	SRCRMB6	12.36%
	CHENNAI	CRCASF	1.6	92	1250	0.87	SRCRMB6	12.36%
	CHENNAI	CRCASF	1.6	92	1250	0.87	SRCRMB6	12.36%
	CHENNAI	CRCASF	1.6	92	1250	0.87	SRCRMB6	12.36%
	CHENNAI	CRCASF	1.6	92	1250	0.87	SRCRMB6	12.36%
	CHENNAI	CRCASF	1.6	92	1250	0.87	SRCRMB6	12.36%
	CHENNAI	CRCASF	1.6	92	1250	0.87	SRCRMB6	12.36%
	CHENNAI	CRCASF	1.6	113	1250	1.06	SRCRMB6	12.36%
	CHENNAI	CRCASF	1.6	113	1250	1.06	SRCRMB6	12.36%
	CHENNAI	CRCASF	1.6	113	1250	1.06	SRCRMB6	12.36%
	CHENNAI	CRCASF	1.2	82	1200	0.76	SRCRMB6	12.36%

	CHENNAI	CRCASF	1.2	82	1200	0.76	SRCRMB6	12.36%
	CHENNAI	CRCASF	1.2	82	1200	0.76	SRCRMB6	12.36%
	CHENNAI	CRCASF	1.2	82	1200	0.76	SRCRMB6	12.36%
	CHENNAI	CRCASF	1.2	82	1200	0.76	SRCRMB6	12.36%
	CHENNAI	CRCASF	1.2	82	1200	0.78	SRCRMB6	12.36%
	CHENNAI	CRCASF	0.8	470	540	0.63	SRIFS01	6,261.80
	CHENNAI	CRCASF	0.8	470	540	0.53	SRIFS01	6,261.80
	CHENNAI	CRCASF	0.8	470	540	0.53	SRIFS01	6,261.80
	CHENNAI	CRCASF	0.8	470	540	0.54	SRIFS01	6,261.80
	CHENNAI	CRCASF	1.6	330	420	0.37	SRCDRW01	12.36%
	CHENNAI	CRCASF	2.5	220	965	0.58	SRCRMB6	12.36%
	CHENNAI	CRCASF	2.5	220	965	0.59	SRCRMB6	12.36%
	CHENNAI	CRCASF	2.5	220	965	0.38	SRCRMB6	12.36%
	CHENNAI	CRCASF	1.5	220	428	1.47	SREDD02	12.36%
					TOTAL	37.15		
Lot 12	B'GARH	CRCACF	1.98	113	0	0.492	SRCRMB6	12.36%
	B'GARH	CRCACF	1.6	113	0	0.473	SRCRMB6	12.36%
	B'GARH	CRCACF	1.6	113	0	0.473	SRCRMB6	12.36%
	B'GARH	CRCACF	2.15	290	0	0.993	SRCRMB6	12.36%
	B'GARH	CRCACF	0.5	306.8	0	0.89	SRSILE3	12.36%
	B'GARH	CRCACF	0.65	90	0	0.55	SRIFS01	12.36%
	B'GARH	CRCACF	0.65	87	0	0.57	SRIFS01	12.36%
	B'GARH	CRCACF	0.7	82	0	0.515	SRIFS01	12.36%
	B'GARH	CRCACF	0.55	78	0	0.44	SRCRMB6	12.36%
	B'GARH	CRCACF	0.55	78	0	0.48	SRCRMB6	12.36%
	B'GARH	CRCACF	0.65	125	0	0.9	SRIFS01	12.36%
	B'GARH	CRCACF	1.4	196	0	1.192	SRIFS01	12.36%
	B'GARH	CRCASF	0.62	220	NA	0.415	SRCRMB6	12.36%
	B'GARH	CRCACF	0.65	195	0	1.189	SREDD02	12.36%
	B'GARH	CRCASF	1.4	140	NA	0.785	SRCRMB6	12.36%
	B'GARH	CRCASF	1.4	140	NA	0.99	SRCRMB6	12.36%
					TOTAL	11.347		
Lot 13	B'GARH	CRCASF	0.57	158	1190	0.47	SRCRMB6	12.36%
	B'GARH	CRCASF	0.65	320	1075	0.6	SRCRMB6	12.36%
	B'GARH	CRCASF	0.65	320	1075	0.795	SRCRMB6	12.36%
	B'GARH	CRCASF	0.6	110	855	0.36	SRCRMB6	12.36%
	B'GARH	CRCASF	0.6	125	990	0.37	SRCRMB6	12.36%
	B'GARH	CRCASF	0.57	309	445	0.655	SRCRMB6	12.36%
	B'GARH	CRCASF	0.57	309	445	0.655	SRCRMB6	12.36%
	B'GARH	CRCASF	0.65	320	1075	0.72	SRCRMB6	12.36%
	B'GARH	CRCASF	0.75	1030	1400	0.55	SRCRMB6	12.36%
	B'GARH	CRCASF	0.45	1250	2500	0.4	SRCRMB6	12.36%
	B'GARH	CRCASF	0.57	158	1190	0.175	SRCRMB6	12.36%
	B'GARH	CRCASF	0.57	158	1190	0.3	SRCRMB6	12.36%
	B'GARH	CRCASF	1.15	230	1195	0.3	SRCRMB6	12.36%
	B'GARH	CRCASF	0.57	309	445	0.38	SRCRMB6	12.36%
	B'GARH	CRCASF	1.4	378	1498	0.65	SRIFS01	12.36%
	B'GARH	CRCASF	0.8	230	730	0.9	SREDD02	12.36%
	B'GARH	CRCASF	1	235	740	0.26	SRCRMB6	12.36%
	B'GARH	CRCASF	0.6	125	990	0.176	SRCRMB6	12.36%
	B'GARH	CRCASF	0.6	125	990	0.2	SRCRMB6	12.36%
	B'GARH	CRCASF	0.6	110	855	0.15	SRCRMB6	12.36%
	B'GARH	CRCASF	1.95	156	1240	0.44	SRCRMB6	12.36%
	B'GARH	CRCASF	0.62	220	1045	1.1	SRCRMB6	12.36%
	B'GARH	CRCASF	0.62	220	1045	0.2	SRCRMB6	12.36%
	B'GARH	CRCASF	1.4	400	475	0.115	SRIFS01	12.36%
	B'GARH	CRCASF	1.35	334	365	0.335	SRCRMB6	12.36%

	B'GARH	CRCASF	0.75	1030	1400	0.3	SRCRMB6	12.36%
					TOTAL	11.556		
Lot 14	B'GARH	HRCF	4.3	266	0	0.816	SRCRM19	12.36%
	B'GARH	HRCF	4.3	266	0	0.816	SRCRM19	12.36%
	B'GARH	HRCF	4.3	266	0	0.816	SRCRM19	12.36%
	B'GARH	HRCF	4.3	232	0	0.711	SRCRM19	12.36%
	B'GARH	HRCF	7.7	153	0	0.85	SRCDRW02	12.36%
	B'GARH	HRCF	7.7	153	0	0.85	SRCDRW02	12.36%
	B'GARH	HRCF	7.7	108	0	0.9	SRCDRW02	12.36%
	B'GARH	HRCF	7.7	108	0	0.33	SRCDRW02	12.36%
	B'GARH	HRPOCF	1.8	231	0	1.032	SRCTRN29	12.36%
	B'GARH	HRPOCF	1.8	231	0	1.032	SRCTRN29	12.36%
	B'GARH	HRPOCF	1.8	231	0	1.028	SRCTRN29	12.36%
	B'GARH	HRPOCF	1.8	231	0	1.028	SRCTRN29	12.36%
	B'GARH	HRPOCF	2.5	270	0	0.98	SRCDRW01	12.36%
	B'GARH	HRPOCF	2.5	270	0	0.971	SRCDRW01	12.36%
	B'GARH	HRPOCF	2.5	400	0	3.487	SRCDRW01	12.36%
	B'GARH	HRPOCF	2.5	405	0	3.53	SRCDRW01	12.36%
	B'GARH	HRPOCF	2.3	175	0	1.521	SRCDRW01	12.36%
	B'GARH	HRPOCF	2.3	305	0	2.651	SRCDRW01	12.36%
	B'GARH	HRPOCF	2.3	252	0	0.432	SRC CRM08	12.36%
	B'GARH	HRPOCF	2.3	250	0	0.489	SRC CRM08	12.36%
	B'GARH	HRPOCF	2.3	285	0	0.429	SRC CRM08	12.36%
	B'GARH	HRPOCF	2.3	252	0	0.432	SRC CRM08	12.36%
	B'GARH	HRPOCF	1.8	231	0	1.086	SRCTRN29	12.36%
	B'GARH	HRPOCF	1.8	231	0	1.086	SRCTRN29	12.36%
	B'GARH	HRPOCF	1.8	231	0	1.062	SRCTRN29	12.36%
	B'GARH	HRPOCF	2.6	380	0	2.283	SRCTRS13	12.36%
	B'GARH	HRPOCF	2.6	380	0	2.283	SRCTRS13	12.36%
	B'GARH	HRPOCF	2.6	326	0	1.948	SRCTRS13	12.36%
	B'GARH	HRPOCF	2.6	326	0	1.948	SRCTRS13	12.36%
	B'GARH	HRPOCF	1.6	404	0	1.836	SRCTRL13	12.36%
	B'GARH	HRPOCF	1.6	404	0	1.836	SRCTRL13	12.36%
	B'GARH	HRPOCF	1.6	404	0	1.836	SRCTRL13	12.36%
	B'GARH	HRPOCF	1.6	404	0	1.831	SRCTRL13	12.36%
	B'GARH	HRPOCF	1.6	404	0	1.831	SRCTRL13	12.36%
	B'GARH	HRPOCF	1.6	404	0	1.831	SRCTRL13	12.36%
	B'GARH	HRPOCF	1.6	404	0	1.768	SRCTRL13	12.36%
	B'GARH	HRPOCF	1.6	404	0	1.768	SRCTRL13	12.36%
	B'GARH	HRPOCF	2	331.8	0	2.03	SRCTRH04	12.36%
	B'GARH	HRPOCF	1.8	234	0	1.376	SRCDRW01	12.36%
	B'GARH	HRPOCF	2.6	380	0	2.236	SRCTRS13	12.36%
	B'GARH	HRPOCF	2.6	380	0	2.236	SRCTRS13	12.36%
	B'GARH	HRPOCF	2.6	314	0	1.465	SRCTRS13	12.36%
	B'GARH	HRPOCF	2.6	314	0	1.465	SRCTRS13	12.36%
	B'GARH	HRPOCF	3.2	220	0	1.902	SRCDRW01	12.36%
	B'GARH	HRPOCF	3.2	271	0	0.347	SRCDRW01	12.36%
	B'GARH	HRPOCF	3.2	271	0	0.347	SRCDRW01	12.36%
	B'GARH	HRPOCF	3.2	130	0	0.166	SRCDRW01	12.36%
	B'GARH	HRPOCF	3.2	130	0	0.166	SRCDRW01	12.36%
	B'GARH	HRPOCF	3.2	125	0	0.16	SRCDRW01	12.36%
	B'GARH	HRPOCF	3.2	125	0	0.16	SRCDRW01	12.36%
	B'GARH	HRPOCF	3.2	125	0	0.16	SRCDRW01	12.36%
	B'GARH	HRPOCF	3.2	672	0	0.591	SRCDRW01	12.36%
	B'GARH	HRPOCF	3.2	652	0	0.573	SRCDRW01	12.36%
	B'GARH	HRPOCF	3.2	140	0	1.227	SRCDRW01	12.36%
	B'GARH	HRPOCF	3.2	140	0	1.21	SRCDRW01	12.36%
	B'GARH	HRPOCF	3.2	130	0	0.931	SRCDRW01	12.36%

	B'GARH	HRPOSF	2.9	340	NA	0.459	SRCDRW01	12.36%
	B'GARH	HRPOSF	2.9	284	NA	0.383	SRCDRW01	12.36%
	B'GARH	HRPOSF	2.9	284	NA	0.383	SRCDRW01	12.36%
	B'GARH	HRPOSF	2.9	284	NA	0.383	SRCDRW01	12.36%
	B'GARH	HRCF	6	212	0	0.35	SRCDRW03	12.36%
	B'GARH	HRCF	6	212	0	0.55	SRCDRW03	12.36%
	B'GARH	HRPOCF	3.2	220	0	1.61	SRCDRW01	RS. 5350/-
					TOTAL	74.23		
Lot 15	B'GARH	HRPLTF	7.65	183	3605	0.48	SRCRM15	12.36%
	B'GARH	HRPLTF	7.65	183	3605	0.58	SRCRM15	12.36%
	B'GARH	HRPLTF	7.7	108	1240	0.35	SRCDRW02	12.36%
	B'GARH	HRPLTF	7.7	108	1240	0.67	SRCDRW02	12.36%
	B'GARH	HRPLTF	7.7	108	1730	0.18	SRCDRW02	12.36%
	B'GARH	HRPLTF	7.7	153	2060	0.26	SRCDRW02	12.36%
	B'GARH	HRPLTF	7.7	196	2435	0.26	SRCDRW02	12.36%
	B'GARH	HRPLTF	7.7	108	1240	0.58	SRCDRW02	12.36%
	B'GARH	HRPLTF	7.7	153	1510	0.245	SRCDRW02	12.36%
	B'GARH	HRPLTF	7.7	108	1240	0.335	SRCDRW02	12.36%
	B'GARH	HRPLTF	7.7	108	1250	1.535	SRCDRW02	12.36%
	B'GARH	HRPLTF	7.7	108	1240	0.975	SRCDRW02	12.36%
	B'GARH	HRPLTF	7.7	108	1240	0.41	SRCDRW02	12.36%
	B'GARH	HRPLTF	7.7	770	2760	0.7	SRCDRW02	12.36%
	B'GARH	HRPLTF	7.7	191	3685	0.11	SRCDRW02	12.36%
	B'GARH	HRPOSF	2.2	178	893	0.055	SRCTRS13	12.36%
	B'GARH	HRPOSF	3.2	213	1250	0.165	SRCTRS13	12.36%
	B'GARH	HRPOSF	2.3	405	872	0.2	SRCDRW03	12.36%
	B'GARH	HRPOSF	2.2	492	993	0.36	SRCDRW01	12.36%
	B'GARH	HRPOSF	3.15	170	1155	0.21	SRCDRW01	12.36%
	B'GARH	HRPOSF	3.2	169	1520	0.24	SRCDRW01	12.36%
	B'GARH	HRPOSF	3.2	169	1520	0.13	SRCDRW01	12.36%
	B'GARH	HRPOSF	1.9	445	910	0.25	SRCTRH04	12.36%
					TOTAL	9.28		
Lot 16	B'GARH	HRSF	5	1250	2500	2.379	SRGEN02	Rs. 4650/-
	B'GARH	HRSF	5	1250	2500	2.5	SRGEN02	Rs. 4650/-
	B'GARH	HRSF	5	1250	2500	2.5	SRGEN02	Rs. 4650/-
	B'GARH	HRSF	5	1250	2500	2.5	SRGEN02	Rs. 4650/-
	B'GARH	HRSF	5	1250	2500	2.5	SRGEN02	Rs. 4650/-
	B'GARH	HRPOSF	3.2	1250	2500	0.5	SRCDRW01	12.36%
	B'GARH	HRSF	2	1250	1940	0.575	SRGENS6	12.36%
	B'GARH	HRSF	3	1500	1920	2.545	SRGENP6	12.36%
					TOTAL	16.00		
				GRAND TOTAL		578.56		