



**OM TOWER, 32 JAWAHARLAL NEHRU  
ROAD . KOLKATA-700071**



Project Brief



Property Images



Location Analysis



Contact Information

## Project Brief

- CBRE has been appointed by mjunction to sell the offices at 32, Jawaharlal Nehru Road, Kolkata-700071.
- The building is one of the most premium Commercial building in one of the most posh locations in the city – Park Street
- The building comes with 3 open car parking.
- The Built-Up Area is measured 3930 ( in Sq ft) in 11<sup>th</sup> floor
- Exquisite flooring and premium fittings adorn the property.
- B+G+14 Construction





# Location Analysis



\* Map Not to Scale

# Location Analysis

Place	Distance (Approx)
Airport	16 KM
Howrah Station	6.9 KM
Sealdah Station	4 KM
HDFC Bank	0.05 KM
Park street Metro Station	0.05 KM
Sector V	14 KM
Ruby Connector	12.5 KM
Nightingale Hospital	1.4 KM
Dalhousie	2.4 KM
Fire Brigade Head quarter	0.5 KM
Park hotel	0.3 KM

# Property Images





## INFORMATION MEMORANDUM



**Lake Land Country Club. Kona  
Expressway Garfa, Howrah- 711403**

March 2020



Project Brief



Property Images



Location  
Analysis



Contact  
Information

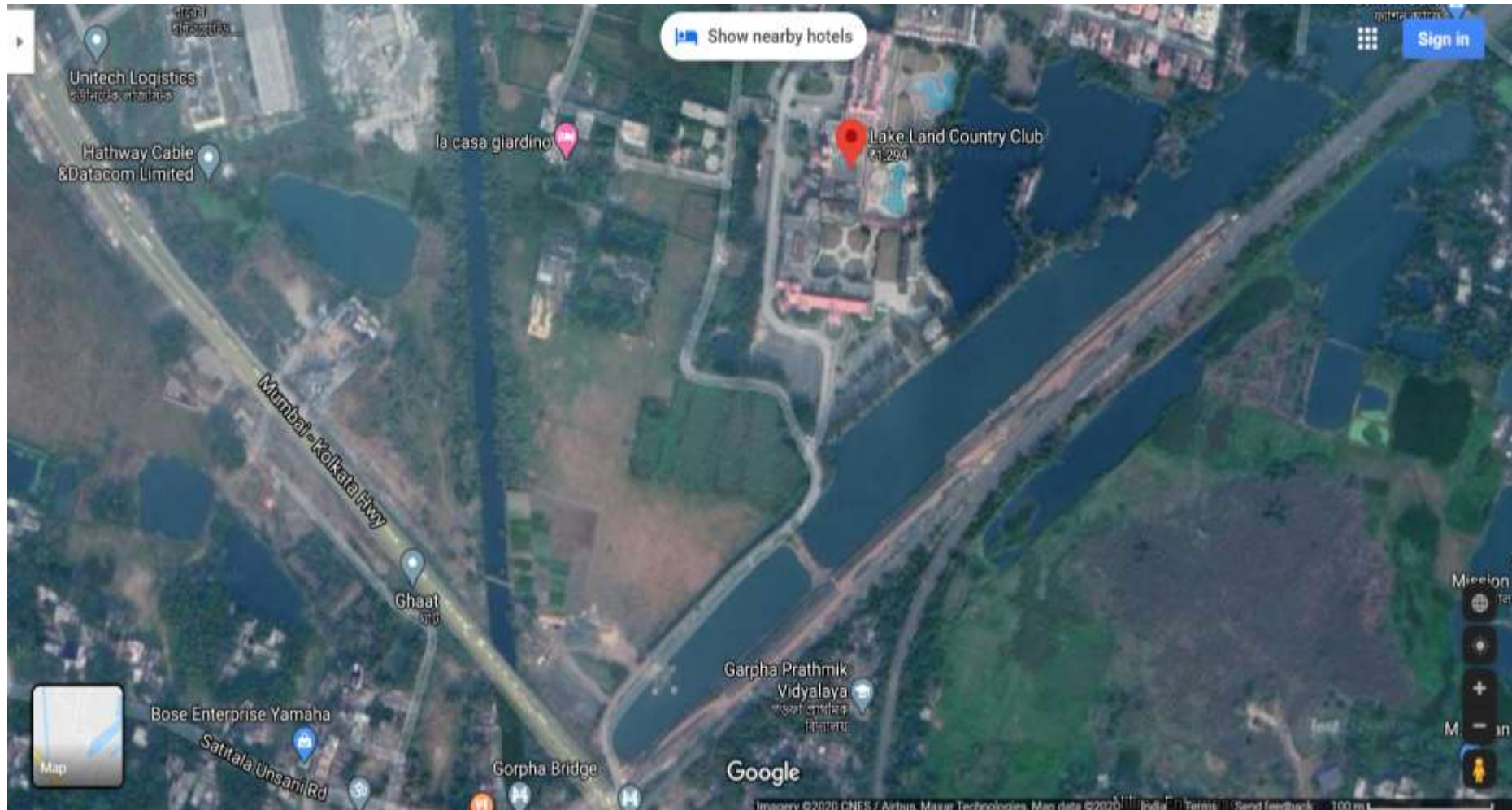


# Project Brief

- CBRE has been appointed to sell 3 Flats in a G+4 Building at Kona Expressway; Munshidanga, Gorfa, Howrah-711403.
- Adjacent to the Fortune Park Panchwati – a 3-star Hotel, Lake Land Country Club is a small gated housing complex comprising of two storied bungalows with children's park, security, swimming pool etc.
- 1BHK- 640 SQ FT-3<sup>rd</sup> floor
- 1BHK-705 SQ FT- 2<sup>nd</sup> Floor
- 2BHK- 1076 SQ FT- 3<sup>rd</sup> floor



# Location Analysis



*\* Map Not to Scale*

# Location Analysis

Place	Distance (Approx. Kms)
Airport	27
Howrah Station	9.4
Santragachi Station	2.5
Shalimar Station	8.6
Rabindra Sadan Metro Station	11.4
Julien Day School, Kona Expressway, Bankra	2.7
Howrah Maidan	10
Dalhousie	10.5
Avani Mall	7
ESI Hospital	2.5
Bankra Hospital	1.4
Vidyasagar Setu	7.3
Park Street	11.3

# Property Images



\* Map Not to Scale





**Luxury 2 Storied Bungalow  
Lake Land Country Club. Kona Expressway  
Garfa, Howrah- 711403**

February 2020



Project Brief



Property Images



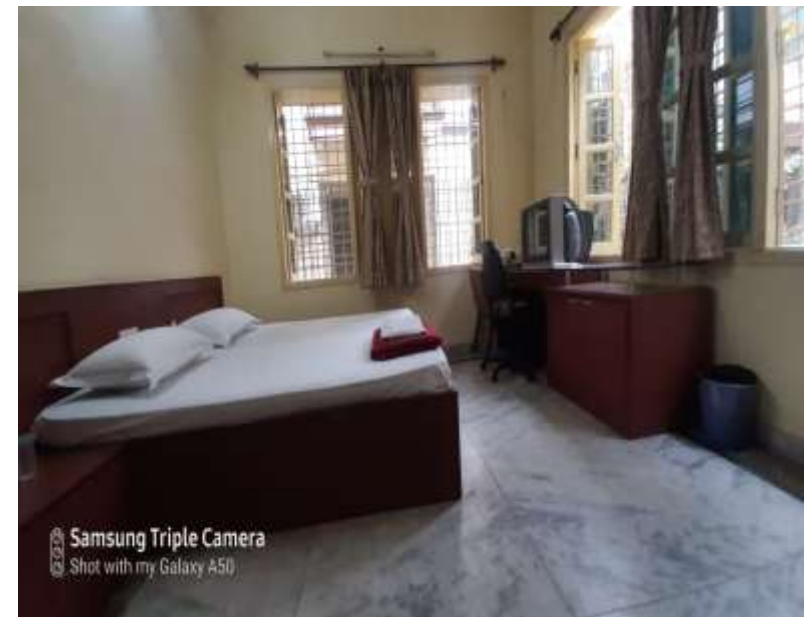
Location Analysis



Contact Information

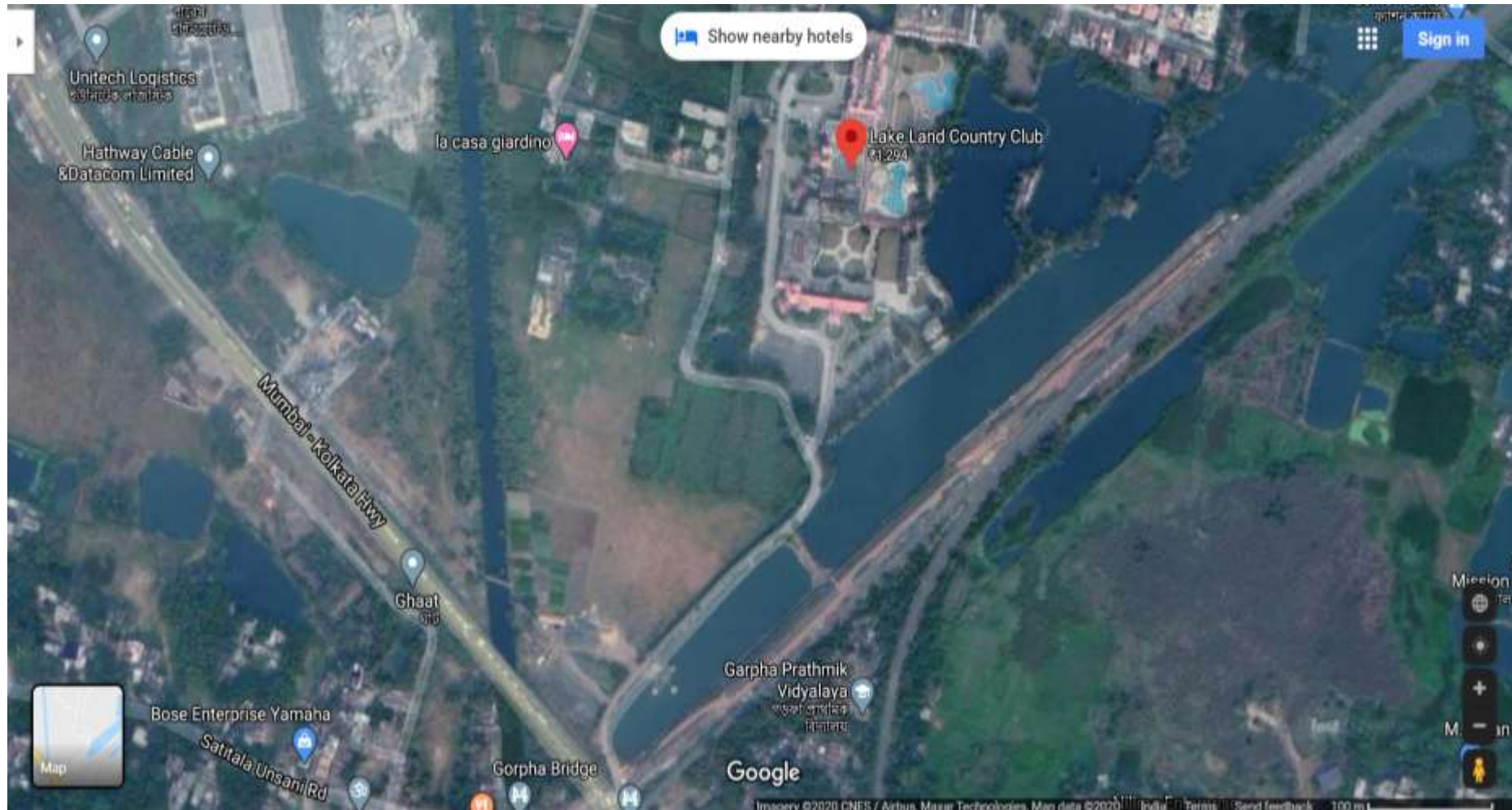
# Project Brief

- CBRE has been appointed by mjunction to sell three luxurious 2 storied bungalows at Kona Expressway; Munshidanga, Gorfa, Howrah-711403.
- Adjacent to the Fortune Park Panchwati – a 3-star Hotel, the bungalows are located within Lake Land Country Club, a small gated housing complex comprising of two storied bungalows with children's park, security etc.
- The bungalows come with a separate servant's room on the roof.
- The Built-Up Area of 2 Bungalows are measured 2128 ( in Sqft) and another Bungalow is measured 1860 ( in Sqft) including both the floors ( Ground and 1<sup>st</sup> floor).
- All the bungalows are having 3 bedrooms with 3 attached toilets along with a servant's room.





# Location Analysis



\* Map Not to Scale



# Location Analysis

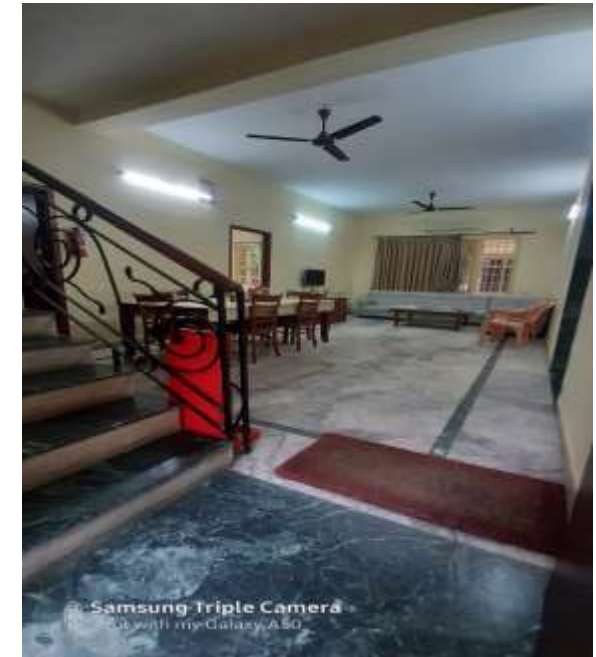
Place	Distance (Approx. Kms)
Airport	27
Howrah Station	9.4
Santragachi Station	2.5
Shalimar Station	8.6
Rabindra Sadan Metro Station	11.4
Julien Day School, Kona Expressway, Bankra	2.7
Howrah Maidan	10
Dalhousie	10.5
Avani Mall	7
ESI Hospital	2.5
Bankra Hospital	1.4
Vidyasagar Setu	7.3
Park Street	11.3

# Property Images



*\* Map Not to Scale*

# Property Images



*\* Map Not to Scale*



# Contact Information

Please Contact  
:

Arnab Roy Karmakar CBRE  
South Asia Pvt. Ltd.

Unit No.702, 7th Floor | PS Pace 1/1 Mahendra Roy  
Lane | Kolkata 700046, India  
Mobile – 91 8017055009  
[Arnab.Roy@cbre.com](mailto:Arnab.Roy@cbre.com) | [www.cbre.com](http://www.cbre.com)

OR

Adnan Faisal CBRE South  
Asia Pvt. Ltd.

Unit No.702, 7th Floor | PS Pace 1/1 Mahendra Roy  
Lane | Kolkata 700046, India  
Mobile – 91 7003317797  
[Adnan.Faisal@cbre.com](mailto:Adnan.Faisal@cbre.com) | [www.cbre.com](http://www.cbre.com)

OR

Gaurav Das  
mjunction services limited

Godrej Waterside, 3rd Floor, Tower 1, Plot V  
Block DP, Sector V, Salt Lake, Kolkata - 700091.  
Mobile : +91 8584008249  
[gaurav.das@mjunction.in](mailto:gaurav.das@mjunction.in)

**DISCLAIMER:** All inspections of property shall be arranged with prior notice of at least 24 hours, Inspections will be conducted between 10 AM – 5 PM. The information contained herein (the "Information") is intended for informational purposes only and should not be relied upon by recipients hereof. Although the Information is believed to be correct, its accuracy, correctness or completeness cannot be guaranteed and has not been verified by either CBRE South Asia Pvt. Limited or any of its affiliates (CBRE Limited and its affiliates are collectively referred to herein as "CBRE"). CBRE neither guarantees, warrants nor assumes any responsibility or liability of any kind with respect to the accuracy, correctness, completeness or suitability of or decisions based upon or in connection with, the Information. The recipient of the Information should take such steps as the recipient may deem appropriate with respect to using the Information. The Information may change and any property described herein may be withdrawn from the market at any time without notice or obligation of any kind on the part of CBRE. Potential purchaser should not rely on any material contained in this brochure as a statement or representation of fact but should satisfy themselves as to its correctness by such independent investigation as they or their legal and or financial advisors deem fit.